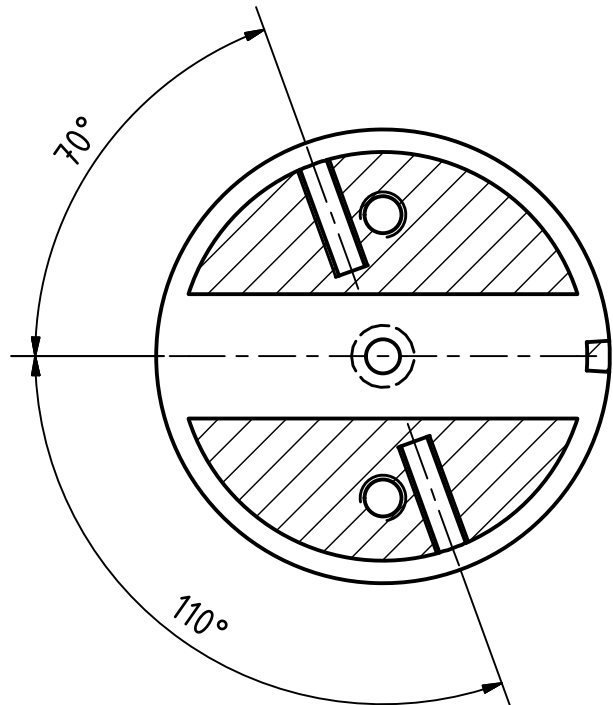


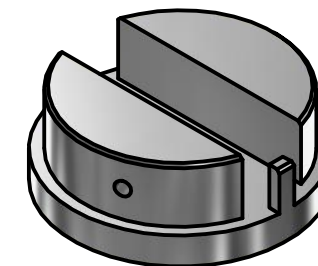
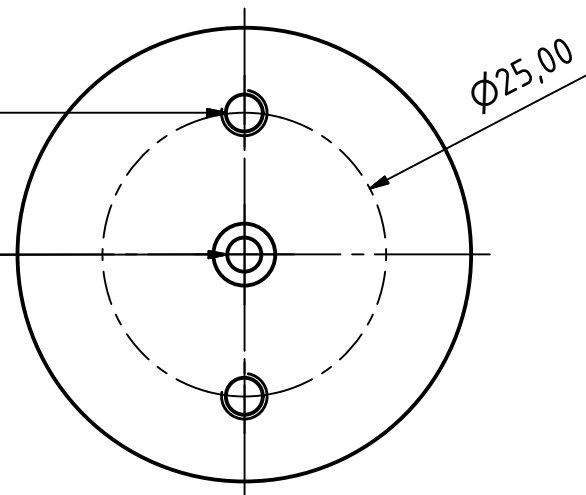
B-B ( 1,5 : 1 )



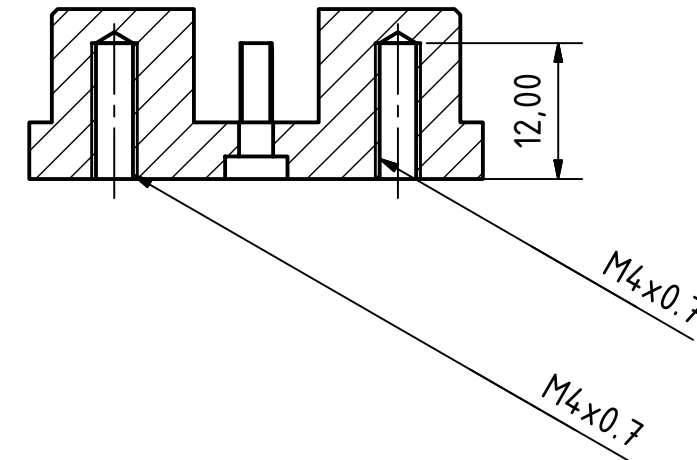
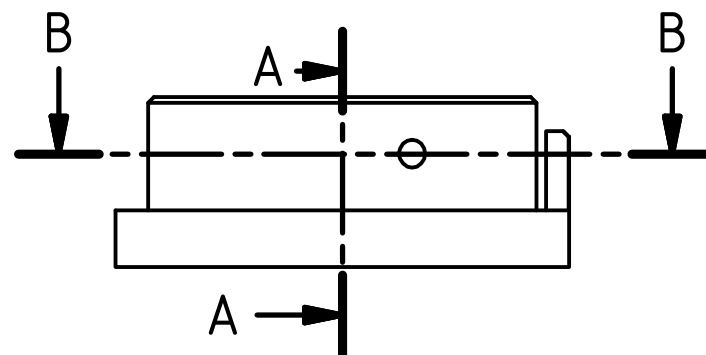
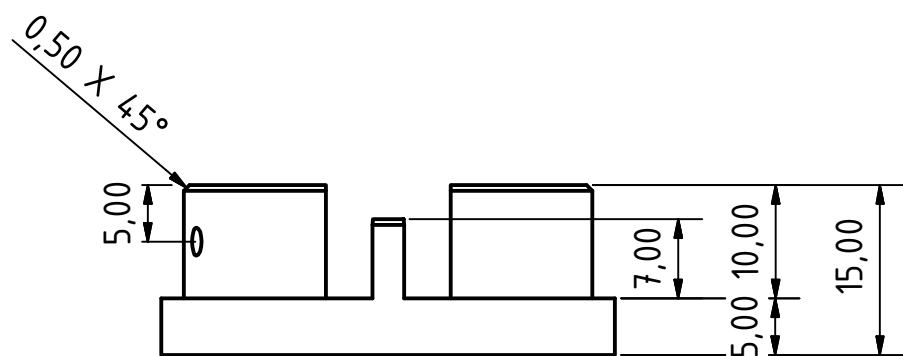
M4x0.7

Ø3,00 DURCH  
Ø5,50 X 2,00

Ø25,00

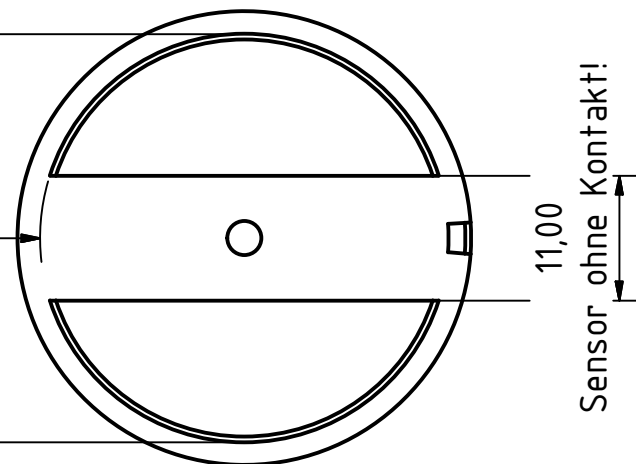


A-A ( 1,5 : 1 )



Ø36,00  
saugend/spielfrei  
an Acrylglasrohr anpassen

R18,00



11,00  
Sensor ohne Kontakt!

Projekt: UnsatPi  
Bauteil: SensorBaseplate  
Revision: 0  
Erstellt am: 29.05.2020  
Erstellt von: Dennis Heinrich  
Material: Aluminium 6061  
Hinweis: Nur zur Verwendung in Forschung und Lehre.